

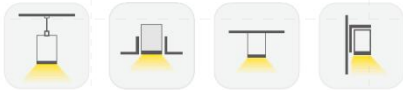
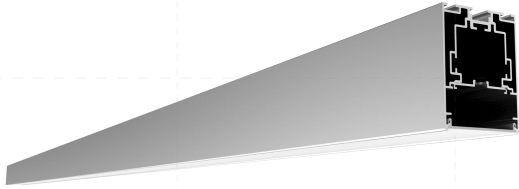
# Specification

Linear lighting system

LS5470(F)

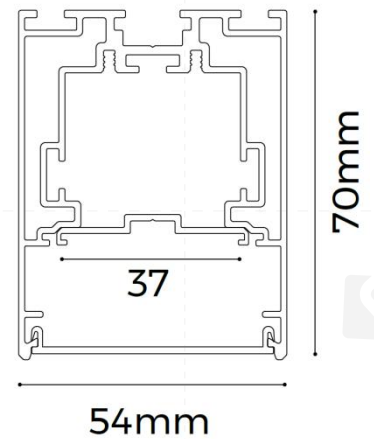


## LS5470(F)

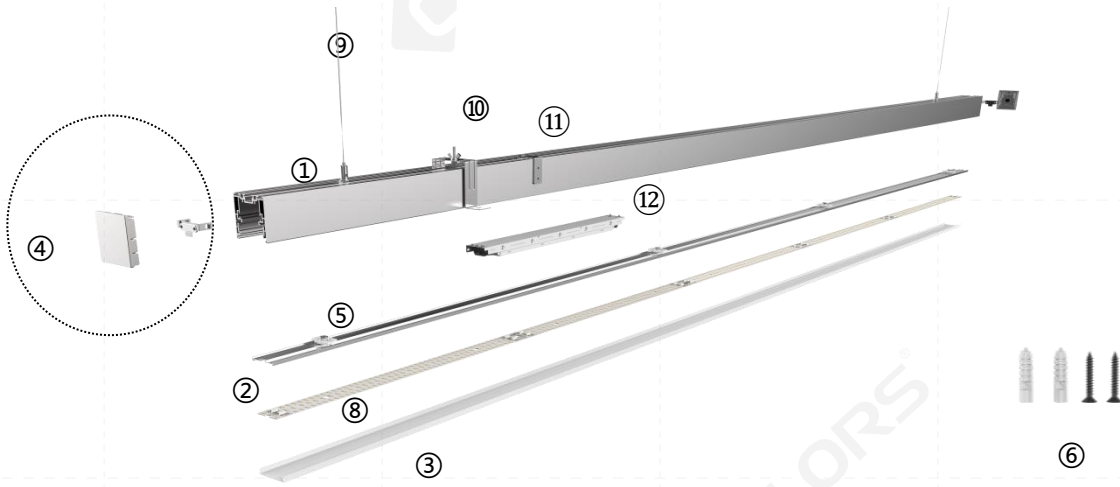


### Features

- Creative magnetic end cap, connect in seconds
- Designed in creative carrier buckle extremely convenient for installation and maintenance
- Designed in anti-leaky block piece, perfect details
- PC diffuser imported from Germany, producing homogeneous & soft lighting
- Free to collocation ordinary PC diffuser, flexible diffuser, anti-glare flexible diffuser, black diffuser, aluminum diffuser
- Provide standard extenders, customizable interconnected corners
- Built-in linear power supply, invisible and beautiful
- Various installation ways: pendant, recessed, surface and wall mounted



## Details















## Standard Configuration





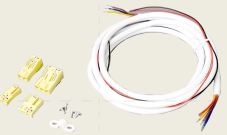
Picture	Item	Parameter	Model
	①Profile /②Carrier:	Profile weight: 4.02kg/2.5m Size: L2500*W54*H70mm Material: AL6063-T5 Surface processing: Anodizing	LS5470(F)
	③Cover	Type: Frosted diffuser Material: PC Light transmittance: 75% Size: L2500*W48.8*H5.6mm PC Feature: The diffuser will extend (shrink) 0.8mm/m when the temperature raises (drops) 10°C.	/
	④End cap	Size: L54*W70*H10.5mm	EC-LS5470(F)
	⑤Quick locker	Size: L32*W22*H6.8mm	BK-02
	⑥Install screw	Size: M3.5*40mm	CL-01

## Optional Accessories





Picture	Item	Parameter	Model
	⑧Flexible strip	Material: FPC,CCT:1900/2300/2700/3000/3500/4000/5000/6000K; CRI > 80/>95; Voltage: 24V; Power: 25W/m; Lumen: 3250Lm/m; Width: 34mm; Minimum cutting unit: 28LEDs/50mm;	D8280-24V-34mm
	⑧Flexible strip	Material: FPC, CCT : 2700-6000K; CRI > 80/>95; Voltage: 24V; Power: 25W/m; Lumen: 2740Lm/m; Width: 34mm; Minimum cutting unit: 28LEDs/50mm; tunable white	D8560SWW-24V-34mm
	⑧Rigid modular	Material: FR4,CCT:1900/2300/2700/3000/3500/4000/5000/6000K; CRI > 80/>95; Voltage: 24V; Power: 25W/m; Lumen: 3250Lm/m; Width: 36mm; Minimum cutting unit: 28LEDs/50mm;	DY8280B-24V-36mm
	⑧Rigid modular	Material: FR4, CCT : 2700-6000K; CRI > 80/>95; Voltage: 24V; Power: 25W/m; Lumen: 2740Lm/m; Width: 36mm; Minimum cutting unit: 28LEDs/50mm; tunable white	DY8560SWW-24V-36mm
	Pendant cable with junction box	Junction box L80*W80*H30mm	PY-D
	Pendant cable without junction box	Steel cable D1.5*2000/4000mm	PN-D
	Recessed buckle	Size: L110*W25*H82mm	RE-03
	Wall-mounted buckle	Size: L50*W34*H18mm	WL-02
	Surface mounted buckle	Size: L90.5*W54*H5.9mm	CL-06
	Whole lamp splice	Size: L80*W51*H6mm	EX-24
	Power supply (Non-dimming)	Size: L365*W30*H18mm Input voltage: AC220-240V; Frequency: 50-60Hz Output voltage: 24V; Max. current: 4.17A PF: ≥0.95; Efficiency: 0.91; Power: 100W Certification: CE/CB	BN-V24-100P-V1
	Power supply (DALI-dimming)	Size: L355*W30*H21mm Input voltage: AC200-240V; Frequency: 50-60Hz Output voltage: 24V; Max. current: 4.2A PF: ≥0.95; Efficiency: 0.90; Power: 100W Certification: TUV/CE/RCM	BK-DGV100-24V0D



Picture	Item	Parameter	Model
	Power supply (1-10V-dimming)	Size: L355*W30*H21mm Input voltage: AC200-240V; Frequency: 50-60Hz Output voltage: 24V; Max. current: 4.2A PF: ≥0.95; Efficiency: 0.92; Power: 100W Certification: TUV/CE/RCM	BK-MGV100-24V0M
	Dimming solution accessory kit	Include 5PIN cable inside luminaire(3 of 18#, 2 of 22#, L=2600mm), 3 sets of male and female terminals.	CM-03
	Non-dimming solution accessory kit	Include 3PIN cable inside luminaire (3 of 18# cables, L=2600mm), 2 sets of male and female terminals.	CM-04
	Non-dimming solution accessory kit	include 3PIN cable outside luminaire (3 of 18# cables, L=2600mm), 1 set of male and female terminals.	CM-05
	Dimming solution accessory kit	Include 5PIN cable outside luminaire (3 of 18#, 2 of 22#, L=2600mm), 2 sets of male and female terminals.	CM-06

### Cover type

Picture	Item	Parameter	Model
	③Cover	Type: Diffuse flexible mask Material: PC + silica gel Transparency: 70% Size: L50000*W48.7*H5.5mm	CV-LS5470FD(F)
		Type:Prismatic flexible mask Material: PC flexible/emboss Transparency: 60% Size: L50000*W48.7*H5.5mm	CV-LS5470FP(F)



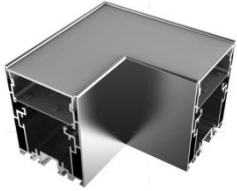
**Corner fittings**

EX-E1 (I-type 180°)	EX-E2 (L-type 90°)	EX-E3 (L-type 90°)	EX-E4 (T-type 90°)
			
EX-E5 (X-type 90°)	EX-E6 (L-type 120°)	EX-E7 (7-type 60°)	EX-E8 (L-type 120°)
			
EX-E9 (Y-type 120°)	EX-E10 (7-type 60°)	EX-E11 (X-type 60°+120°)	EX-E12 (T-type 60°+120°)
			
EX-23			
			



## Corners

L-type corner (L90-LS5470(F))



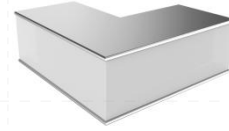
Al6063-T5&PC  
4W  
L100\*W100\*H70mm

L-type inner corner(L90N-LS5470(F))



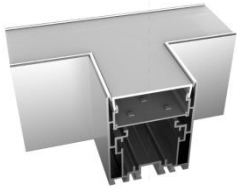
Al6063-T5&PC  
3W  
L100\*W100\*H54mm

L-type exterior corner(L90W-LS5470(F))



Al6063-T5&PC  
8W  
L150\*W150\*H54mm

T-type corner(T90-LS5470(F))



Al6063-T5&PC  
5W  
L150\*W100\*H70mm

X-type corner(X90-LS5470(F))

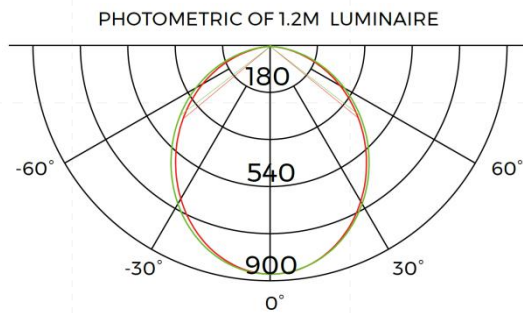


Al6063-T5&PC  
6W  
L150\*W150\*H70mm

\* The corners can be provided with or without light source.

## Optical Parameter

D8280-24V-34mm light source, frosted diffuser

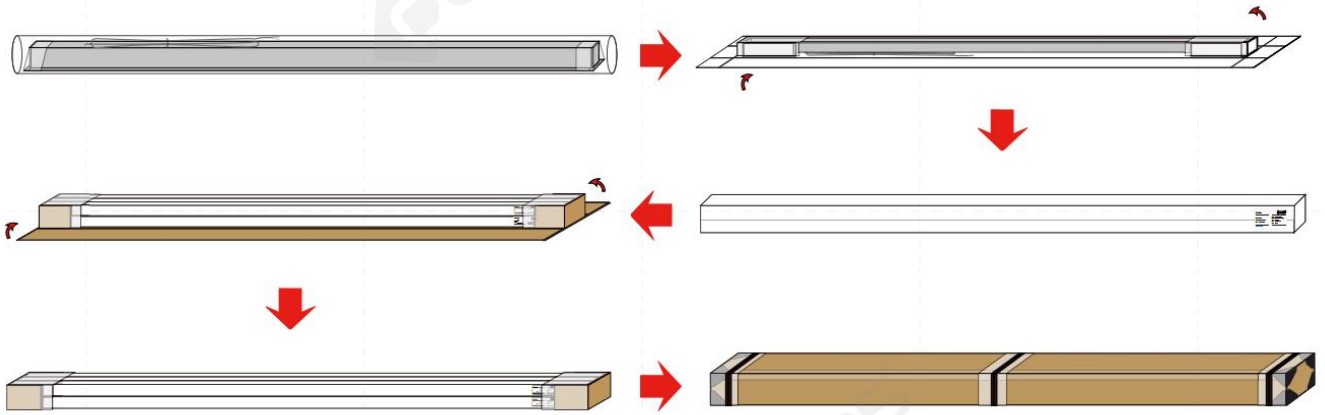


1m	312.8,877.3lx	243.14cm
2m	78.20,219.3lx	486.29cm
3m	34.75,97.48lx	729.43cm
5m	12.51,35.09lx	1215.71cm
7m	6.384,17.90lx	1966.01cm
Height	Eavg,Emax	Angle:101.12deg Diameter

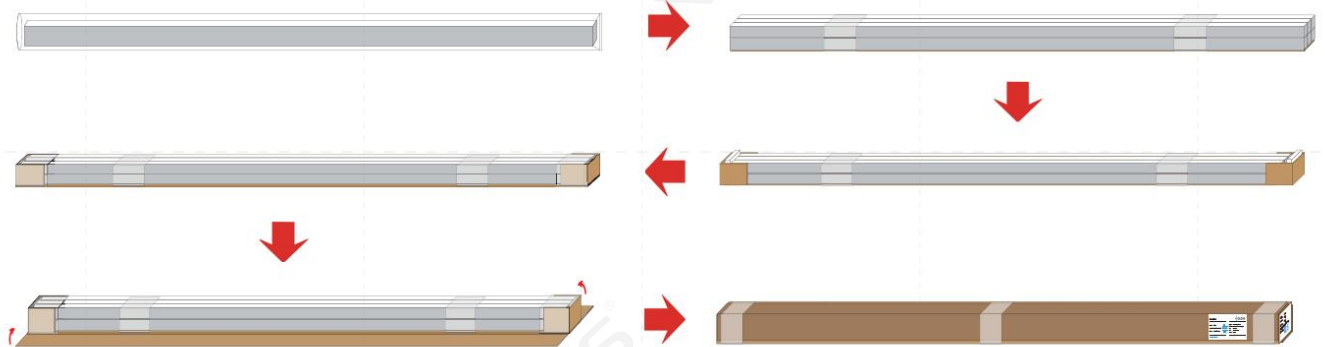


**Package**

Mode 1 :



Mode 2 :



Components	Packaging material	Size(mm)	NW(kg)	GW(kg)	Content
Single piece	Hat box	2560*99*65mm	4.62	5.12	1pcs/box
Whole bundle	Hat box	2580*228*219mm	27.72	30.72	6pcs/box
Whole box packaging	Paper box	2580*192*168mm	27.72	30.72	6pcs/box

